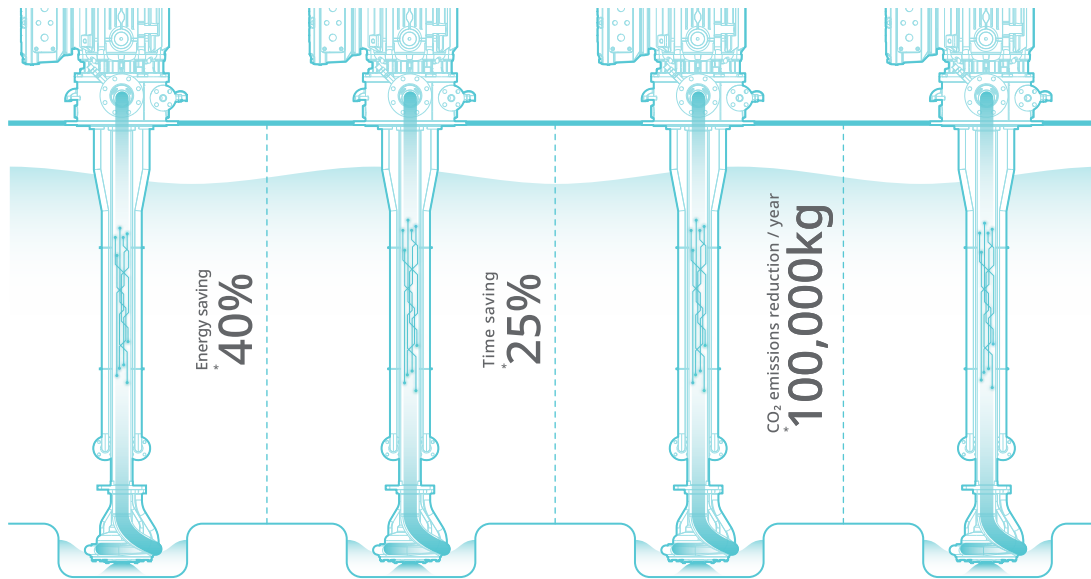


“Maximize **Efficiency** and Minimize **Wear.**”



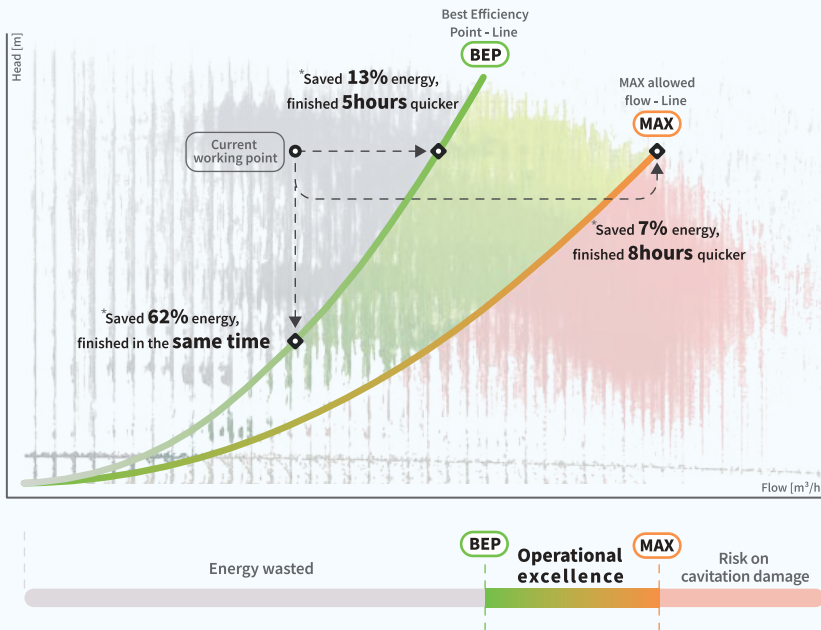
Enabled only by **Electric Drives**

- ROI achievable within **\*4years**
- Energy savings up to **\*40%**
- Time savings up to **\*25%**
- **\*100.000 kg/year** reduced CO<sub>2</sub>
- Extend service life
- Safe operation



\* Data varies depending on the situation. Please contact sales for more information.

## Automatically run your pump at the operational excellence point



We are a market leader in the European segment of chemical and product tankers for inland navigation and play a leading role in the field of **Electric driven deepwell cargo pumps. ATEX certified** for ensuring safe and future-proof discharging.

**Smart Pumping** is a system for simultaneous, automatic, energy-efficient unloading of multiple tanks on a ship carrying liquid cargo.

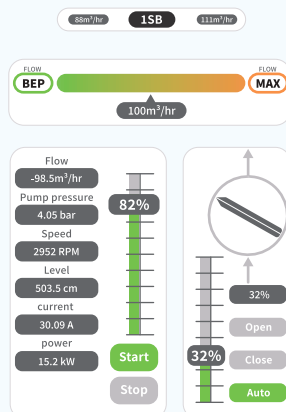
This system can be integrated into new ships or retrofitted onto existing vessels equipped with MarFlex deepwell pumps.

The system optimizes pump performance, resulting in significant energy savings and reduced CO<sub>2</sub> emissions. In case time is of the essence, the fastest possible discharge point can be selected while avoiding cavitation. This benefits the lifetime of the pumps.

'Pumping for Life' revolves around three essential themes crucial to our customers. Our pumps are designed to last a lifetime and operate with the utmost efficiency, resulting in energy savings. This benefits our planet and the future generations inhabiting it. Moreover, our products enhance workplace safety. Reduced deck maintenance lowers risks for ship crew, thereby increasing safety.

## Smart Pumping Solution comprises three options

- 1 Basic energy savings up to \*20%**  
Ensures pumps operate at their peak efficiency. Crew can choose between maximum energy savings(BEP) or the fastest release(MAX) based on the discharge plan.
- 2 Enhanced energy savings up to \*40%**  
With sensor integration, pump speed and valve position adjust automatically to varying tank levels or pipe resistance, optimizing efficiency.
- 3 Autonomous cargo handling**  
Integration with the loading computer enables near-complete automation of the discharge plan.



- **No wear-and-tear parts between dockings**
- **Effortless pumping up to 30m tank depths**
- **Pump frequency profile is optimised to prevent resonance at any operation point**